



RAM QUARTER
18 RAM STREET SW18





A spacious and modern 1 bedroom apartment in the new stylish Ram Quarter in the heart of Wandsworth.

- 1 Bedroom
- 1 Bathroom
- Wandsworth Town
- Concierge
- New development
- 502 sq ft (46 sq m)
- Furnished
- EPC: B

PRICE

£350 per week
Furnished

GROSS INTERNAL AREA

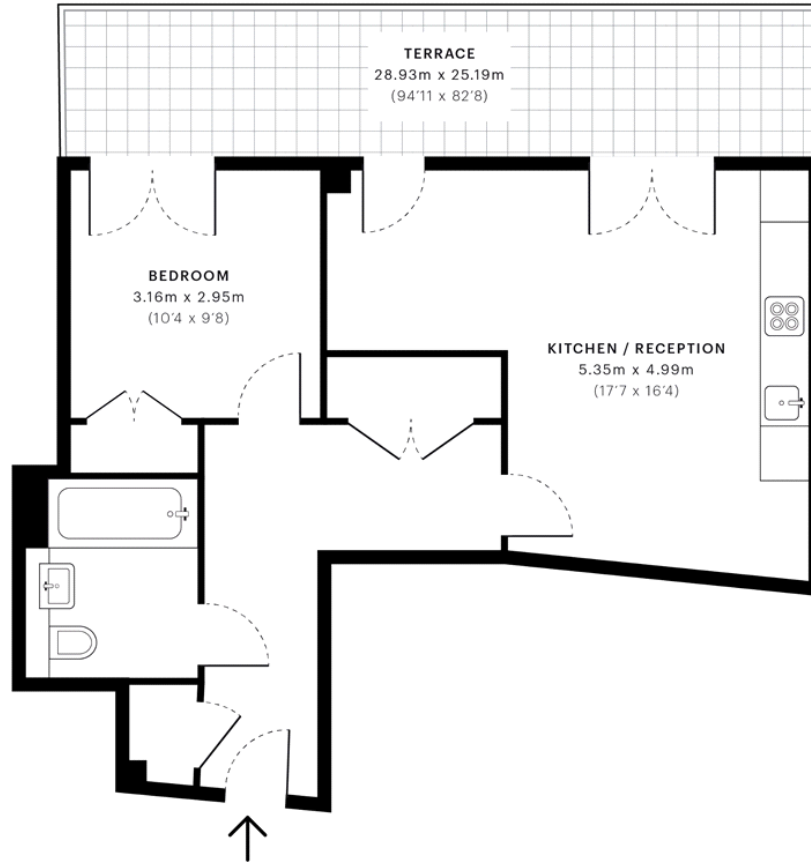
502 sq ft (47 sq m)

LOCAL AUTHORITY

Wandsworth


Dorset House, SW18

Total Internal Area
65.31 Sqm / 703.00 Sqft



— Ground Floor

 Restricted Head Height
0.00 Sqm / 0.00 Sqft

 External Structural Features
16.87 Sqm / 181.59 Sqft

Gross Internal Area (IPMS 3B)
65.31 Sqm / 703.00 Sqft

Net Internal Area (IPMS 3C)
46.70 Sqm / 502.68 Sqft

Spec floor plan captured for JLL, Nine Elms on 21/06/2018 using 165,093,397 laser scan points, accurate to +/- 3cm. Produced in accordance with Royal Institution of Chartered Surveyors Property Measurement Standards, incorporating International Property Measurement Standard (IPMS). If you intend to rely on any measurement in a transaction you should perform your own checks. Plot/Gardens illustrative only and excluded from all area calculations.

Restricted Head Height = Limited use area under 1.5m. **External Structural Features** = Balconies, terraces or verandas or similar. **IPMS 3B** = gross internal area measured from the internal faces of external walls, including walls/obstructions and external structural features, excluding stairwell area above/below the ground floor. **IPMS 3C** = net internal area excluding internal walls/obstructions and stairwell area above/below the ground floor. **Total Internal Area** = IPMS 3B gross area + stairwell area above/below ground floor of 0.



Unit C1
4 Riverlight Quay
London
SW11 8DG

jll.co.uk/residential

These particulars are for general information only and do not constitute any part of an offer or contract. All statements contained therein are made without responsibility on the part of the vendors or lessors and are not to be relied upon as statement or representation of fact. Intending purchasers or lessees must satisfy themselves, by inspection, or otherwise, as to the correctness of each of the statements or dimensions contained in these particulars..